



## Installation

The software of Visual Components can be installed in two different ways:

- From the Installation DVD
- From the Internet

3DCreate has been designed for the following Microsoft operating systems:

- Windows XP with service pack 1 or higher
- Windows Vista 32bit or 64bit version by using „Windows XP“ compatibility mode
- Windows 7 32bit or 64bit version by using „Windows XP“ compatibility mode

To ensure that the software is running smoothly it is recommended to use a computer with a minimum of 1GB (3DRealize)/2GB (3DCreate) RAM , performance laptop with a minimum 1024 x 768 pixel resolution display. The graphics card should support OpenGL

### Installing from DVD

If AutoPlay is enabled, the installation program starts automatically. If AutoPlay is not enabled, the installation program can be manually started from Start -> Run. By typing in the location, or browse to the location the "Setup3DProduct.exe" can be started from the CD. The instructions need to be followed in order to complete the installation.

### Installing from the Web

Download and run the "Setup3DProduct.exe". The installation file can be found from the Visual Components home page ([www.visualcomponents.com](http://www.visualcomponents.com)) under Support -> Downloads -> Products. Follow the instructions to complete the installation.

### Installation procedure

After the setup program starts the Welcome screen appears. It immediately follows into the license agreement (EULA ). You must accept the license agreement before the installation can continue. Not accepting the license agreement will result in the cancellation of the installation process. Select "I accept..." and click "Install".

During the installation the progress of the installation is shown in a progress bar in the installation dialog. You can cancel the installation at any time by clicking "Cancel". By cancelling the installation the software will not be properly installed on your computer.

Once the installation process is completed click "Finish" to finish the installation. The software has now been successfully installed on your system. In order to use the software activation is required. This applies also for evaluation purposes.

# Standalone License Activation

Products of the Visual Components software family require activation before usage and can be activated in two different ways:

- Automatically by Activation Wizard
- Manually

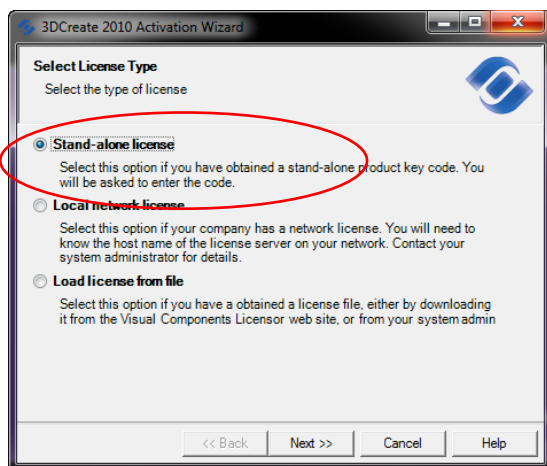
In order to easily activate the software of Visual Components ensure the following mandatory requirements:

- A valid product key
- Internet access
- In order to enable automatic activation it might be required to allow the traffic through the firewall of the PC.

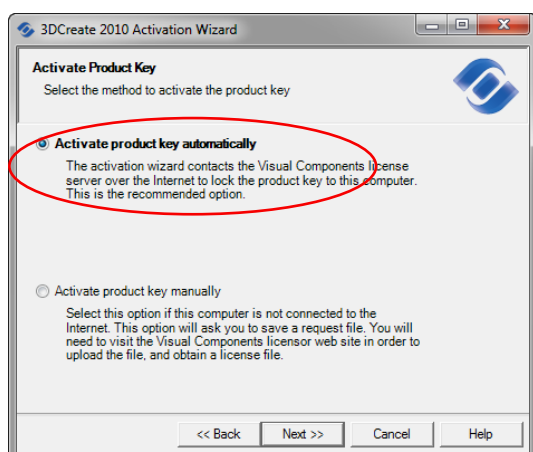
A valid product key is needed to activate 3DCreate, 3DRealizeR and 3DRealize. A product key can be acquired by contacting the regional reseller or Visual Components. In order to evaluate the software for 7 days, a trail key can be obtained by sending an email to [sales@visualcomponents.com](mailto:sales@visualcomponents.com) or contact your closest reseller.

## Activation Wizard

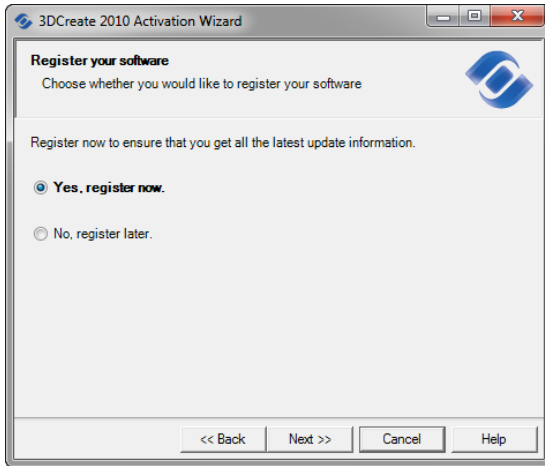
The activation wizard is opened when the software is launched for the first time. Select "Stand-alone License" from the selection list.



Enter the license key and activate it automatically. It is always recommended to activate the license key automatically since it is faster and easier. Please note that automatic activation requires a working Internet connection.



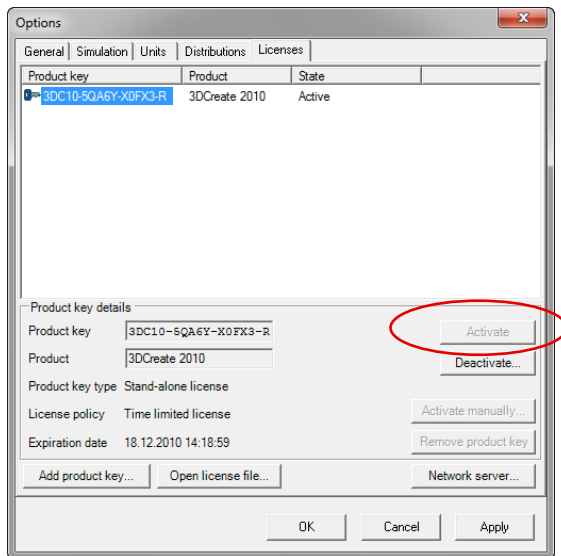
After successfully activating the license on the Visual Components license server, you are asked if you would like to register your software. It is recommended to register your license key, since it enables comfortable license management through the Visual Components portal ([portal.visualcomponents.net](http://portal.visualcomponents.net)). Furthermore, manual license activation and deactivation is only possible through the portal.



Once the license is activated the software will start up and you are ready to go!

## Deactivating a standalone license

The license key can be deactivated from within the running software. Please make sure that you have no unsaved layout or components in the 3D World, since the application will close automatically once the license key is deactivated. From the menu bar choose 'Tools->Options' and select the 'Licenses' tab. This dialog contains the information of the current activated license key.



Select the license from the 'Product key' field and press deactivate. Please note that you have to be connected to the internet for the automatic Deactivation wizard to contact the Visual Components license server. Confirm the warning for deactivating the active license.

After the license has been successfully deactivated from the server the dialog can be closed. Closing the dialog will result in the application to close as well. The key can now be used on another computer for activation.

# Troubleshooting

If you have problems installing and activating a product of Visual Components 3D Family please ensure that the following requirements are full filled:

- Installation requires administrator rights
- Activation requires a working Internet connection
- The product key must be valid
- A product key can only be used on one computer at a time
- The product key can only be used for the exact product and version it was generated for

If your problem persists contact your closest reseller partner for assistance or the Visual Components help desk by Email to [support@visualcomponents.com](mailto:support@visualcomponents.com). In order to assist with problems, the product key and a detailed description of the problem is required.