



Floating License Installation

Floating licenses are well suited for multi-user environments. Licenses are not bound to specific computers, and can be obtained on demand. A license server is required to use floating licenses.

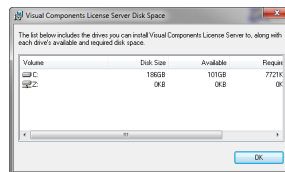
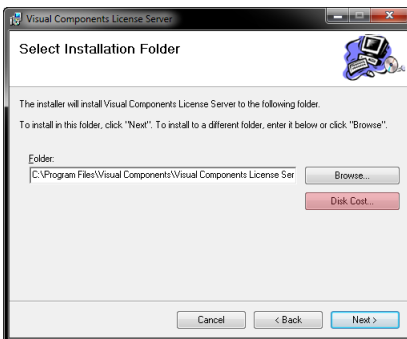
For normal usage, a network connection to the license server is required. To be able to run any product of the Visual Components product suite in offline environments as well, floating licenses can be conveniently "borrowed" (i.e. checking out a license) for a specified period from within the application.

Pre-Requirements

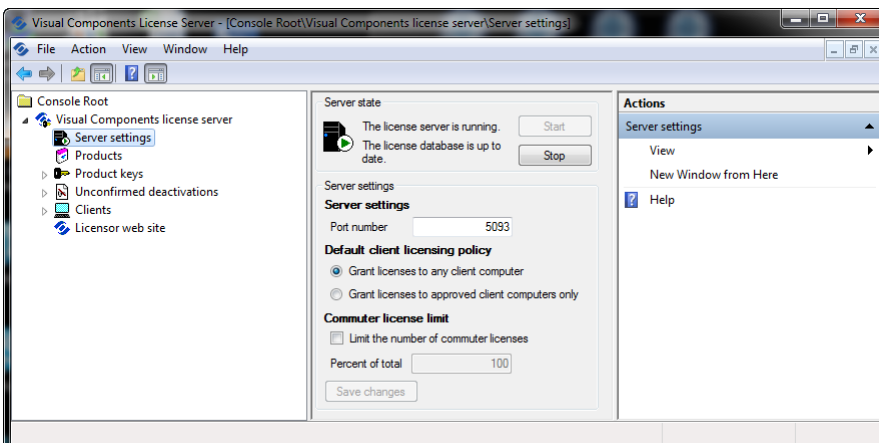
The license server can be installed on any internal network server running Microsoft Windows XP and up. We recommend the installation only for experienced network administrators who have full privileges on the server machine. Please note that the computer needs to have the Microsoft Management Console (MMC) installed. The OS specific MMC package can be downloaded from the Microsoft website. Furthermore ensure that the .NET framework 3.5 is installed.

Installing the License Server

Start the installation process with a double click on "SetupVCLicenseServer.msi". The installation wizard will guide you through the installation process. The default installation path is "C:\Program Files\Visual Components\Visual Components License Server". When changing the default installation path, space requirements can be checked by clicking 'Check cost'.

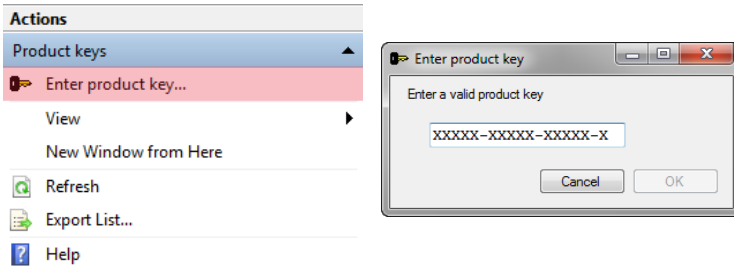


We recommend to accept the default server settings and advise only to change them if the settings are in conflict with predefined settings on the local network server. The default server settings are shown below:



Activate Floating License

Once the Visual Components license server is successfully installed on the local network server, the valid license key(s) need(s) to be activated. To enter a license key, select under 'Console root' the entry 'Product keys'. Select from the action column on the right hand side 'Enter product key...' Enter your product key into the dialog and press 'OK':



Once the product key is entered it will appear in the product key list. Select the key and choose from the action column on the right hand side 'Validate product key...'. The local network server will now contact the Visual Components License Server to verify the product key and activate it.

Download and Install the Software

The application has to be installed on each machine on which an individual user will use it. Visit the Visual Components webpage at www.visualcomponents.com and install the software. Start the installation process with a double click on the executable (e.g. 3DCreate.exe). The install wizard will guide you through the installation process.

Activating the Software with a Floating License

On the first start after the installation, the floating license has to be set up. Choose 'Floating License' from the activation dialog. Ask your network administrator for the following details to connect to the local floating license server:

- server name
- port

After successful license validation, you are ready to use your product from the Visual Components software suite. The settings for the floating license will be stored and remembered for the next time. When requesting a license from the license server the license is 'locked' while the software is open for other users. The license gets automatically freed when all instances of the application on one computer are closed.

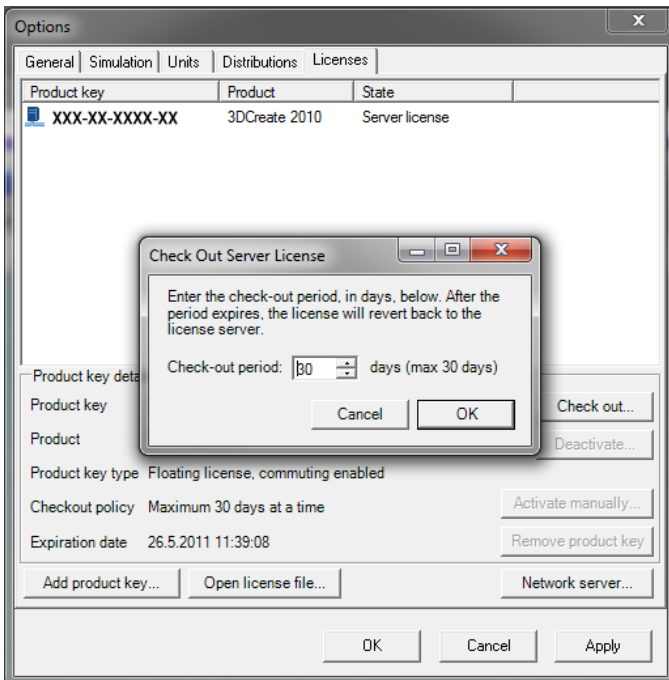
Please note that the application can only activate if the computer on which it is supposed to run has a connection to the local network. Without a direct connection to the local license server the application will fail to start.

NOTE: You must be connected to your local network in which the license server resides in order to be able to receive a license. Ask your network administrator for details on how to connect from outside networks via VPN.

Optional: Borrowing a License

Borrowing a license is a temporary checkout of a floating license from the license server to use a Visual Components product during a period where no connection to the license server is possible. To borrow a license, start the dialog in the application from the menu:

- Help -> Borrow License...
- Choose a date or enter the borrow duration (in days).
- Press 'Check out'



Note that for the borrowed time, the floating license will not be available on the license server for other users.

Deactivate Floating License

If a product key needs to be removed from the local license server, we always recommend to deactivate the key using the automatic deactivation tool from the action column on the right hand side 'Deactivate product key...'. In case the product key has not been able to deactivate properly contact support@visualcomponents.com for further instructions on how to deactivate and reactivate a product key manually.

Activating and Deactivating a floating license key on a network server **MANUALLY** is time consuming and requires the knowledge of an experienced network administrator.

Troubleshooting

In cases that the connection to the Visual Components license server cannot be established an exception has to be added into the Windows Firewall (Firewall > Exceptions > Add Port 5093 > UDP).

Ensure when adding the exception to the firewall that the protocol type is changed to UDP.

